

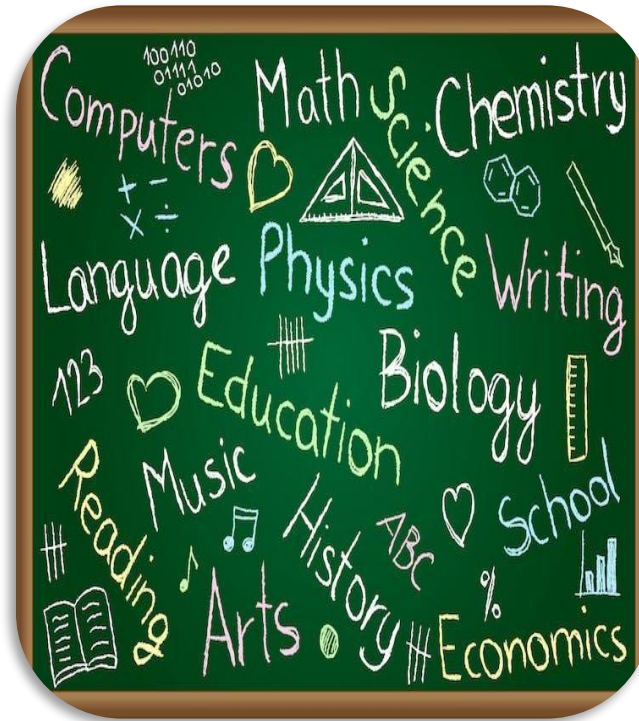
Subject Selection and Further Studies

John Ng

Careers Master



Self



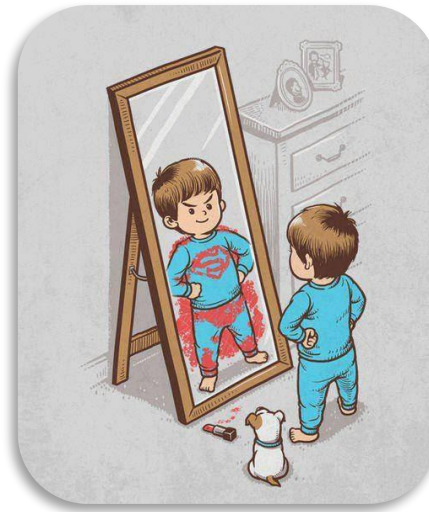
Curriculum



Careers

Interest

- ▶ Books, websites, videos
- ▶ Self-Directed Search
- ▶ Extra-curricular Activities
 - ▶ community service, scouting, treasurer



Self

- ▶ Academic Performance
- ▶ Skills
 - ▶ eg creativity, analytical skills, language skills, computational skills
- ▶ Parents, teachers, peers

Ability

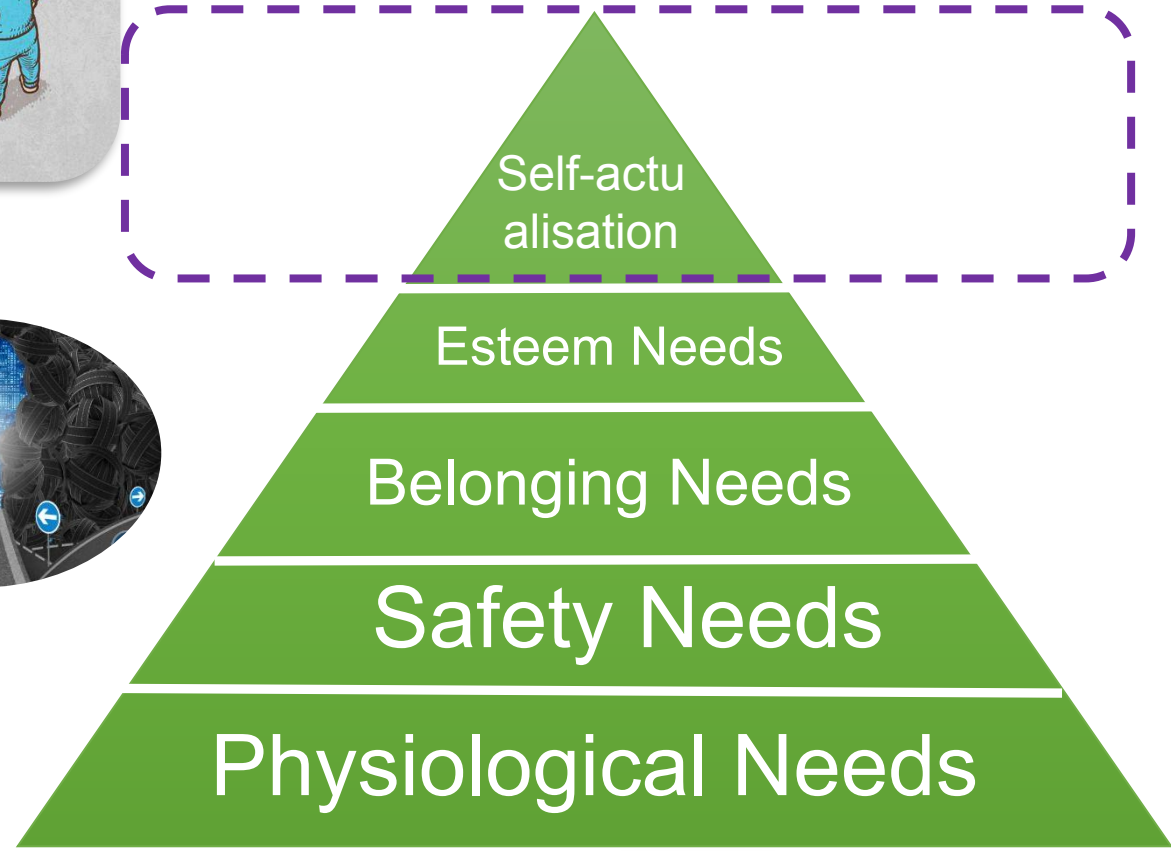


Values



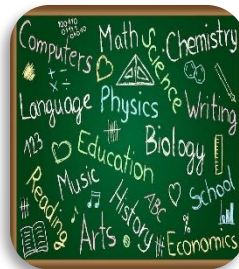
Self

- ▶ Appreciation of diversity in religions and cultures
- ▶ A sense of wonder and curiosity about peoples, places and environments
- ▶ Responsibility for conserving, protecting and maintaining the quality of the environment
- ▶ Impact in social, economic, industrial, environmental and technological contexts



Aspiration

Curriculum and Assessment Guide



Curriculum

Science Education
Key Learning Area

Physics
Curriculum and Assessment Guide
(Secondary 4 - 6)

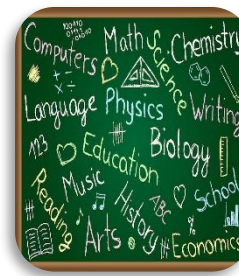
Jointly prepared by the Curriculum Development Council and
The Hong Kong Examinations and Assessment Authority

Recommended for use in schools by the Education Bureau
HKSARG
2007 (with updates in November 2015)

Module / Option	No. of hours allocated	
The Compulsory Part	144	
A. Information Processing	37	
<i>a. Introduction to Information Processing</i>		3
<i>b. Data Organisation and Data Control</i>		4
<i>c. Data Representation</i>		10
<i>d. Data Manipulation and Analysis</i>		20
B. Computer System Fundamentals	20	
<i>a. Basic Machine Organisation</i>		14
<i>b. System Software</i>		6
C. Internet and its Applications	31	
<i>a. Networking and Internet Basics</i>		9
<i>b. Internet Services and Applications</i>		5
<i>c. Elementary Web Authoring</i>		3
<i>d. Threats and Security on the Internet</i>		14
D. Computational Thinking and Programming	48	
<i>a. Problem-Formulation and Analysis</i>		5
<i>b. Algorithm Design</i>		12
<i>c. Program Development</i>		20
<i>d. Program Testing and Debugging</i>		11
E. Social Implications	8	
<i>a. Technological Innovations</i>		3
<i>b. Health and Ethical Issues</i>		3
<i>c. Intellectual Property</i>		2
The Elective Part (Choose any two only)	76	
A. Databases	38	
<i>a. Relational Databases Concepts</i>		6
<i>b. SQL</i>		18
<i>c. Database Design Methodology</i>		14
B. Web Application Development	38	
<i>a. Network Services and Implementation</i>		14
<i>b. Web Programming and Applications</i>		24
C. Algorithm and Programming	38	
<i>a. Programming</i>		32
<i>b. Applications of Programming in Real Life</i>		6
School-based Assessment	30	
Total Curriculum Time	250 hours¹	

時期	課題	學習要點	說明
夏商周	1. 周代分封	<ul style="list-style-type: none"> 兩次分封形成的政治局面 兩次分封促成的民族搏成 	西周初年，兩度分封，開拓疆土，使周天子的地位得以鞏固，從而改變了夏、商以來的政治局面，並促成了民族的搏成。
	2. 春秋戰國的政治與社會變動	<ul style="list-style-type: none"> 西周與春秋在政治和社會兩方面的不同 春秋和戰國在政治和社會兩方面的不同 春秋戰國諸子百家爭鳴局面的形成 	平王東遷，周室衰微，長達五百多年的春秋、戰國，是中國歷史上政治與社會劇烈變動的時代。春秋時期諸侯雖爭相割據，仍願尊已無力號令天下的天子為領袖；而分封制雖漸崩壞，禮法仍能維繫社會的相對安定。戰國時期，諸侯兼併成風、簒弑相乘，周室已失卻象徵性質的地位；社會方面，隨著貴族沒落、平民興起、工商業蓬勃發展、知識階層抬頭，社會形態跟周初推行分封時已有很大的改變。

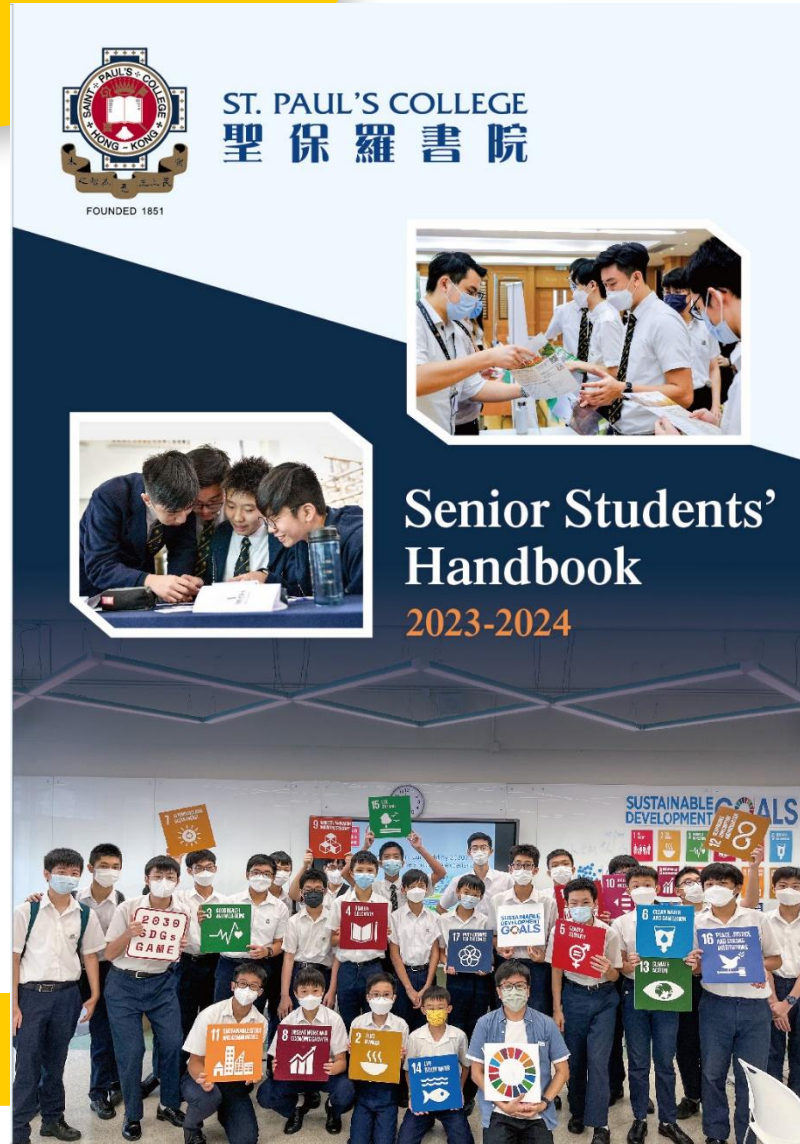
SPC Course Catalogue



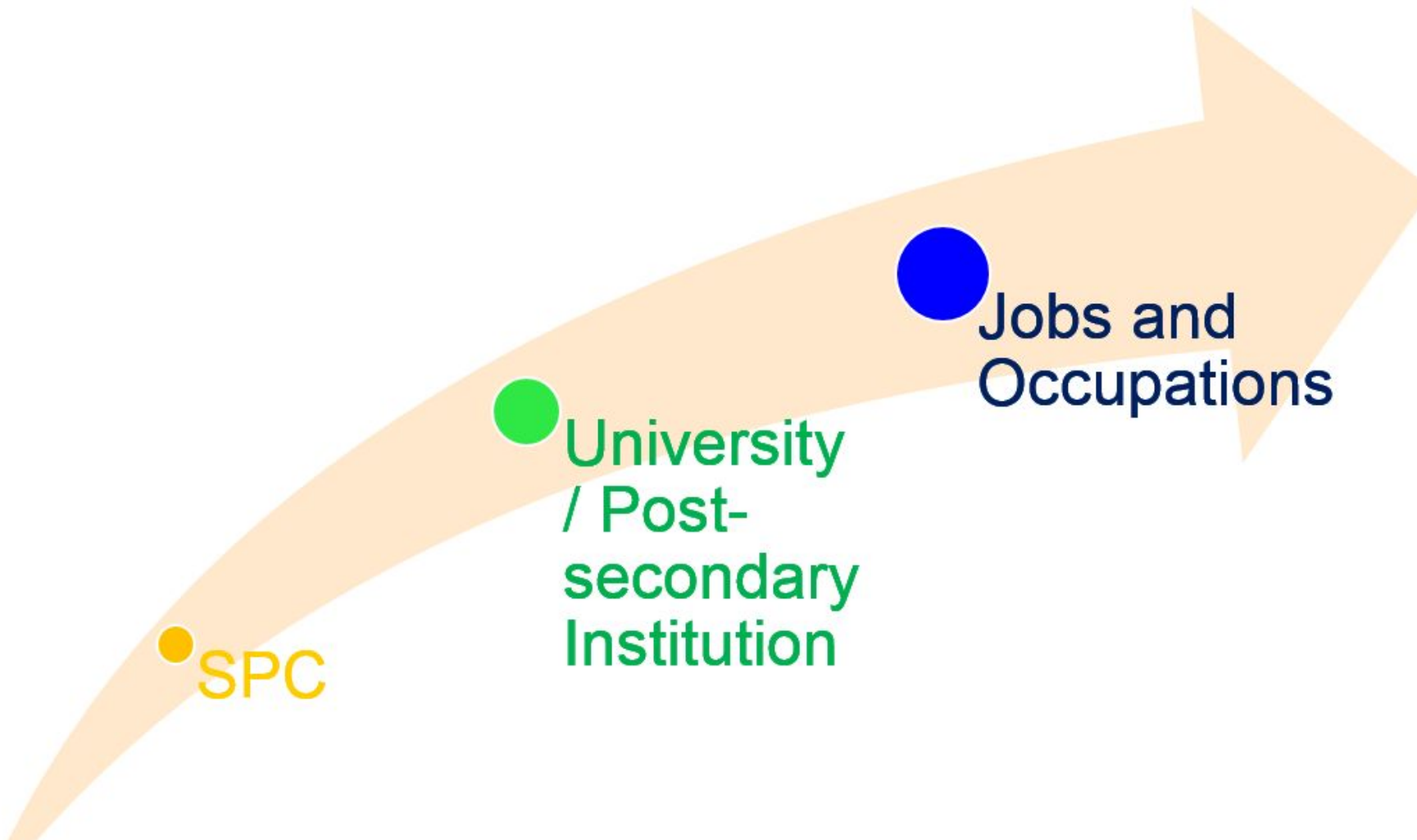
Curriculum

Senior Form
Students

Teachers



Careers





Logistic and Trading



Transportation



Aviation



Innovative Science and Technology



Media and Publishing



Banking and Finance



Real Estate Industry



Accounting



Building and Engineering



Marketing and Public Relations



Law



Design



Administration and Human Resources



Tourism



Public Administration



Education and Training



Social and Public Services



Medical Care



Entertainment and Arts



Services and Retail



Other Occupations



<https://lifeplanning.edb.gov.hk/tc/career/career-information/index.html>



Accounting

Accountant

Accounting Clerk

Auditor

Accountant

Duties

The main duties of accountant is to conceive financial plans and manage the company's financial arrangements on the premise of the company's overall interests. The main duties of accountant are as follow:

- Document daily financial transactions
- Prepare annual reports and financial reports
- Maintain accounting controls and financial security
- Organise and prepare tax payments



Working hours

40-50 a week, it requires work overtime during the peak seasons



Working environment

Require to communicate with different parties; need to work under pressure



Personality

- Attention to details
- Patient



Promotion and Reference Salary

Accountant

Approximately \$13,000 or above

Accountant manager

Approximately \$44,000 or above

Chief Financial Officer

Approximately \$70,000 or above

Note: The reference salary and the promotion salary may vary according to the company, experience and ability.

Entry requirements

- Required a bachelor degree in accounting, or equivalent, and a Hong Kong Institute of Certified Public Accountants Qualification Programme (CPA QP) to become an accountant
- For the people who do not have accounting bachelor degree, you can also get the qualification from other way to become an accountant, see from below:- study Accredited Accounting Technician (AAT) Examination and get PA and PBE- then you can get the qualification of Certified Public Accountants Qualification programme
- Good command of spoken and written English and Chinese
- Require a basic computer skills (Type in Chinese and English and MS Excel)

Example of related training and courses

Higher Diploma / Associate Degree

- [Hong Kong Baptist University, School of Continuing Education – Associate of Science \(Professional Accountancy\)](#)
- [Hong Kong Institute of Vocational Education, Vocational Training Council - Higher Diploma in Accountancy with Business Analytics](#)
- [Hong Kong Management Association - Advanced Diploma in Professional Accounting Studies \(DADAS\) Diploma in Professional Accounting Studies \(DDAS\)](#)

Bachelor Degree

- [University of Hong Kong – Bachelor of Business Administration \(Accounting & Finance\)](#)
- [City University of Hong Kong – Bachelor of Business Administration \(Accounting\)](#)
- [The Chinese University of Hong Kong – Professional in Accountancy](#)
- [The Hang Seng University of Hong Kong– Bachelor of Business Administration \(Honours\) in Professional Accountancy](#)

Industry Sharing

行業分享: Mr. Daniel Tang (資深會計師)

這份工作 最具挑戰性的地方?

What is the most challenging part of your job?

Daniel Tang
資深會計師
會計業界

Watch on YouTube

Mr. Daniel Tang (Fellow Certified Public Accountant)

(Collated transcript)



Chinese Language



English Language



Mathematics



Citizenship and Social Development



Elective 1



Elective 2

General Entrance Requirements

CityU Veterinary Medicine	Biology and Chemistry
HKBU Chinese Medicine and Biomedical Science	Biology and/or Chemistry
CUHK Medicine	Biology or Chemistry
HKU BBA (Business Analytics)	Biology, Chemistry, ICT or Physics
HKU Quantitative Finance	M1 or M2
HKU Engineering	Physics



The information may be updated by the institutions. Please refer to their official websites for the latest information.

Programme Entrance Requirements

CityU Electrical Engineering

(x2) ICT, M1/M2, Physics
(x1.5) Biology, Chemistry

HKBU Game Design and Animation

(x1.15) Visual Arts

CUHK Financial Technology

(x1.75) M1/M2
(x1.5) Biology, BAFS, Chemistry, Economics, ICT, Physics

PolyU Fashion

(Preferred Subjects) Economics, Visual Arts

PolyU Physiotherapy

(Preferred Subjects) Biology, Physics

HKU Dental Surgery

(x1.3) Biology / Chemistry / Physics

2023 Entry

*The information may be updated by the institutions.
Please refer to their official websites for the latest information.*

**Programme
Entrance
Requirements**



Subject Prerequisite

Subject Weighting

Selection Principle



M1/M2



The information may be updated by the institutions. Please refer to their official websites for the latest information.



May be Included

- Architectural Studies
- Landscape Studies
- Urban Studies
- Design+
- Surveying
- Arts
- Arts and Language Education
- Humanities and Digital Technologies
- Early Childhood Education and Special Education
- Financial Technology
- Global Health and Development
- Chinese Medicine
- Nursing
- Social Sciences
- Social Work
- Journalism
- Psychology

Level 3 or above is preferred

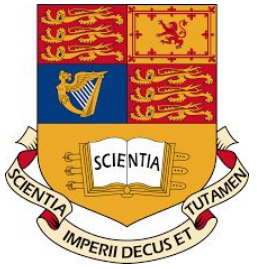
- Business Analytics
- Global Engineering and Business
- Marketing Analytics and Technology
- Biomedical Engineering
- Engineering Science
- Engineering
- Arts and Sciences
- Science Master Class

Level 3 or above

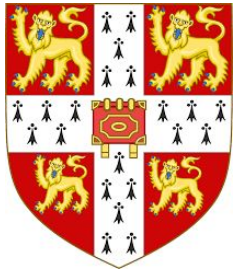
- Quantitative Finance
- Data Science and Engineering

Level 4 or above

- Applied Artificial Intelligence
- Actuarial Science



Imperial
College
London



University
of
Cambridge



University College
London



University
of Toronto

Hong Kong

Hong Kong Diploma of Secondary Education
(HKDSE)

Grade 5 - 5* in relevant subjects. Where Mathematics is required applicants should achieve the required grade in both the Mathematics compulsory and Mathematics Extended 1 or 2 components.

Please note that for Cambridge courses that require Mathematics and Further Mathematics A Levels, applicants are required to take Extended Module 2 (Algebra and Calculus) Mathematics as part of their core.

For Cambridge courses that require Mathematics A Level, applicants are advised to take either Extended Module 1 (Calculus and Statistics) or Extended Module 2 (Algebra and Calculus) Mathematics as part of their core.

A Level Further Mathematics and/or Mathematics is desirable but not a requirement for some courses. Prospective applicants for these courses might want to consider taking the appropriate Mathematics Extended Module.

Minimum equivalent entry requirement for A level grades ABB (2022 entry)

Award of one of the following will be considered:

- HKDSE: Hong Kong Diploma of Secondary Education (HKDSE) with level 5 in English Language and Mathematics (compulsory unit), and level 3 in Chinese and Liberal Studies. Level 5 will be required in 3 elective subjects. Applicants for degree programmes where mathematics is required, a level 5* will be required for the compulsory Mathematics element and a minimum of level 5 for the extended algebra and calculus extended element (the calculus and statistics extended component will not be acceptable for these subjects). For subjects that require an A* at GCE A-level Mathematics, level 5* will be required in the extended component. For these programmes only two further elective subjects will be required.
- HKALE: Hong Kong Advanced Level Examinations (HKALE) Science/Mathematics subjects, grades BBB; in all other HKALE subjects, ABB.

The information may be updated by the institutions. Please refer to their official websites for the latest information.

Minimum Admission Requirements:

Hong Kong Diploma of Secondary Education (HKDSE): the completed diploma, including at least 2 elective subjects from Categories A and/or C. Subjects should include prerequisites for intended programs. Mathematics Module 1 (Calculus and Statistics) or Module 2 (Algebra and Calculus) is required for programs with the Calculus prerequisite. Applicants who are not completing Module 1 or 2 may present Advanced Level Mathematics or AP Calculus as an alternative. For admission requirements to the Faculty of Applied Science and Engineering, refer to Engineering.

UK University Programme	A-level Subject Requirements
Business	(Useful) Mathematics, Business Studies, Economics
Computer Science	(Useful) Further Mathematics, Physics, ICT
Dentistry	(Essential) Chemistry, Biology, Mathematics/Physics
Engineering	(Essential) Mathematics, Physics/Chemistry (Useful) Further Mathematics
Geography	(Essential) Geography (Useful) Biology, Chemistry, Mathematics, Physics
History	(Essential) History (Useful) Economics, Theology or Religious Studies
Mathematics	(Essential) Mathematics and/or Further Mathematics (Useful) Physics
Medicine	(Essential) Chemistry, Biology and/or Mathematics/Physics
Nursing	(Essential) Chemistry
Physiotherapy	(Essential) Biology (Useful) Chemistry, Physics, Mathematics
Psychology	(Essential) Biology, Chemistry, Mathematics, Physics (Useful) History
Veterinary Medicine	(Essential) Chemistry, Biology, Mathematics/Physics

Find your path